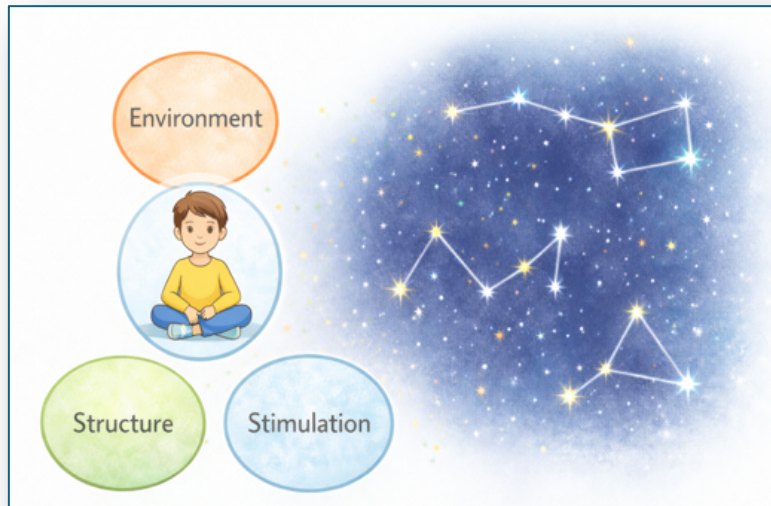


Childhood Neurodiversity Recognition Framework

Parents Essentials Guide



Introduction

Understanding Children Who Think, Focus, and Learn Differently

Children do not all experience attention, energy, and learning in the same way.

Some children move quickly between ideas but struggle to organise tasks. Others focus deeply on interests but find repetitive tasks difficult. Some experience strong bursts of energy or emotion that influence how they respond to routines.

These differences are part of what we call **neurodiversity**.

This **Essentials guide** offers a short introduction to recognising these patterns at home.

The **full Recognition Workbook** provides a deeper process for observing patterns across time, environments, and experiences so that parents and educators can build a clearer understanding together.

Everyday Neurodiversity

Children often show different patterns of attention and engagement.

You may notice things like:

- strong focus on favourite activities
- difficulty beginning routine tasks
- bursts of energy or emotion
- frustration during transitions

These patterns are not simply behaviour problems.

They often reflect how attention, motivation, and emotional regulation work in the brain.

Harnessing ADHD For Life

The goal is not to change who your child is. The goal is to **recognise patterns so you can support them more effectively.**

The Role of Environment at Home

Children's ability to focus, regulate energy, and engage with tasks is often influenced by the environments around them. What may appear as difficult behaviour in one situation may look very different in another.

At home, many small factors can influence how a child responds to everyday expectations. Levels of noise and stimulation, the structure of routines, the pace of transitions between activities, and the clarity of instructions can all affect how easily a child sustains attention or completes tasks.

For example, some children find it easier to concentrate when activities are clearly structured and broken into smaller steps. Others may respond better when they have opportunities for movement, exploration, or choice in how they approach a task. Transitions can also play an important role. Moving from play to homework, or from screen time to bedtime, may require more time and support for some children than for others.

Understanding the interaction between the child and the environment can help parents see that challenges are not always located solely within the child. Often they arise through the relationship between the child's natural patterns of attention and the demands of the situation.

By noticing how engagement changes across different situations at home, parents can begin to recognise patterns. These patterns often provide helpful clues about what kinds of conditions support their child's focus, participation, and emotional balance.

and the next

Everyday Observation Prompts

Many parents begin to understand their child's patterns simply by noticing how they respond to everyday situations at home. These observations do not need to be complicated. Often it is the small, repeated moments that provide the most helpful clues.

Rather than focusing on isolated incidents, it can be useful to look for recurring themes in how your child approaches tasks, responds to routines, and manages transitions between activities.

The prompts below can help guide these observations.

1. Attention and Interest

When does your child appear most focused or absorbed?

Are there activities, hobbies, or subjects where they show strong interest or deep concentration?



Harnessing ADHD For Life

2. Beginning Tasks

How easily does your child begin tasks such as homework, chores, or getting ready for school?

Do they start quickly, hesitate, or need reminders and encouragement before beginning?

3. Sustaining Attention

How long does your child usually remain engaged with a task?

Does their attention change depending on how interesting or stimulating the activity feels?

4. Transitions Between Activities

How easily does your child move from one activity to another, such as stopping play to start homework or preparing for bedtime?

5. Emotional Responses

How does your child typically respond when tasks feel difficult or frustrating?

Do certain situations appear to trigger stronger emotional reactions?

6. Environmental Influences

Are there conditions at home that seem to support your child's focus or calmness?
For example, quieter spaces, clearer routines, or shorter tasks.

These observations are not intended to label your child or reach a diagnosis. Instead, they help parents begin recognising patterns in how their child experiences everyday situations. Over time, these patterns often reveal helpful insights about what supports their child's engagement and wellbeing.

Harnessing ADHD For Life

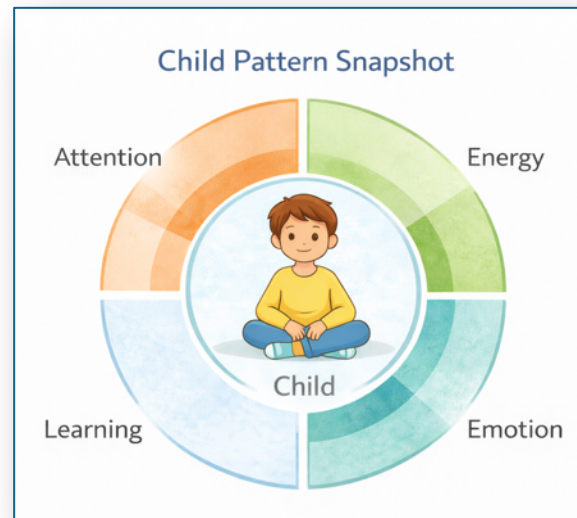
Child Pattern Snapshot

After noticing how your child responds across different everyday situations, it can be helpful to pause and look at the patterns that may be emerging. Often these patterns become clearer when observations are brought together visually.

The **Child Pattern Snapshot** is designed as a simple way for parents to reflect on what they are noticing. Rather than focusing on individual moments, it encourages a broader view of how attention, energy, engagement, and environment interact.

Using the snapshot, parents can consider questions such as:

- Where does my child's attention appear strongest?
- Where does sustaining attention seem more difficult?
- What situations at home appear to support engagement and calmness?
- Are there environments or activities where challenges appear more often?
- How does my child respond to routines, instructions, or transitions between activities?
- Are there patterns in energy, frustration, or emotional responses during certain parts of the day?



The purpose of the snapshot is not to create a score or label. Instead, it provides a simple way to step back and see the patterns that may be developing across everyday life.

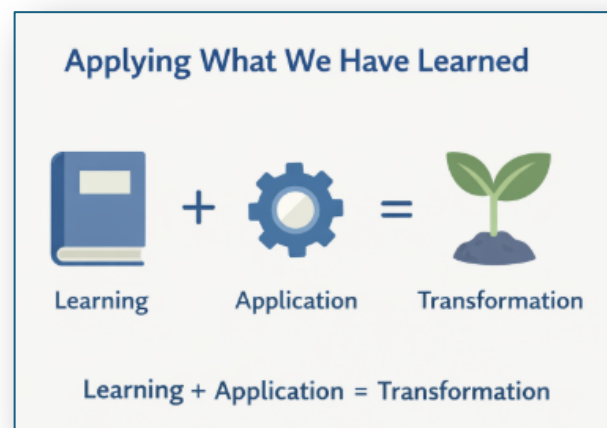
When these patterns become clearer, it often becomes easier to think about what kinds of routines, environments, or approaches may help support the child more effectively.

Supporting Your Child Through Adjustments

When patterns begin to emerge, parents can often support their child through small adjustments in everyday routines and environments. In many cases, meaningful improvements do not come from large changes but from thoughtful shifts in how tasks, expectations, and transitions are approached.

For example, some children respond well when tasks are broken into smaller, clearer steps. This can make activities such as homework, chores, or preparing for school feel more manageable. Others may benefit from predictable routines that reduce uncertainty and help them know what to expect during the day.

Transitions between activities can also become easier when children are given advance notice or gentle reminders before a change occurs. A few minutes of warning before moving from play to



Harnessing ADHD For Life

homework or from screen time to bedtime can help some children adjust their focus more comfortably.

Creating environments that reduce unnecessary distractions may also support attention. A quieter space for homework, shorter task periods with breaks, or opportunities for movement can help some children remain engaged for longer.

These adjustments are not about lowering expectations. They are about recognising how a child experiences attention, energy, and regulation, and creating conditions that allow them to participate more successfully.

When understanding is combined with practical action, small changes can often lead to meaningful improvements.

When Deeper Understanding May Help

The observations in this Essentials guide can help parents begin to recognise patterns in how their child focuses, responds to everyday situations, and engages with routines at home. For many families, these early insights are enough to guide small adjustments that make daily life smoother and less stressful.

However, some patterns become clearer when observations are gathered across a longer period of time and across different environments. A child's attention, energy, and emotional responses may look different at home, at school, during structured tasks, or during free play.

The full version of the **Childhood Neurodiversity Recognition Workbook** provides a deeper framework for doing this. It guides parents and educators through a structured process of observing patterns across time, environments, and learning experiences. It also includes tools for mapping these patterns and developing practical responses that support the child's engagement and wellbeing.

Many families find that using the Recognition Workbook together with educators helps build a clearer and more balanced understanding of how the child experiences both home and school environments.

Parent Service Provision

The Full Childhood Neurodiversity Recognition Workbook for Parents

A practical guide designed to help parents recognise patterns in how their child experiences attention, energy, and learning across different environments.

The workbook helps parents move from uncertainty towards clearer observation and understanding, using the same recognition framework used by educators.

Parents are guided through:

- recognising patterns in attention and engagement
- simple pattern mapping across home and school environments
- creating a Child Pattern Snapshot
- applying small adjustments that support participation and confidence

Price Options:

Workbook only. **US \$130 / £99**

Workbook with Guiding Videos: **US \$270 / £199**

Harnessing ADHD For Life

About Harnessing ADHD For Life

This ***Childhood Neurodiversity Recognition Workbook*** is part of ***Harnessing ADHD For Life*** - a practical framework for people who want to understand how their attention, energy, and responses actually work - and then design life around that reality.

It is not about fixing who we are. It is about recognising and building ways of living that work for you.

Email: connect@Harnessing-ADHD.com

WhatsApp/Telegram: +855-92-400100